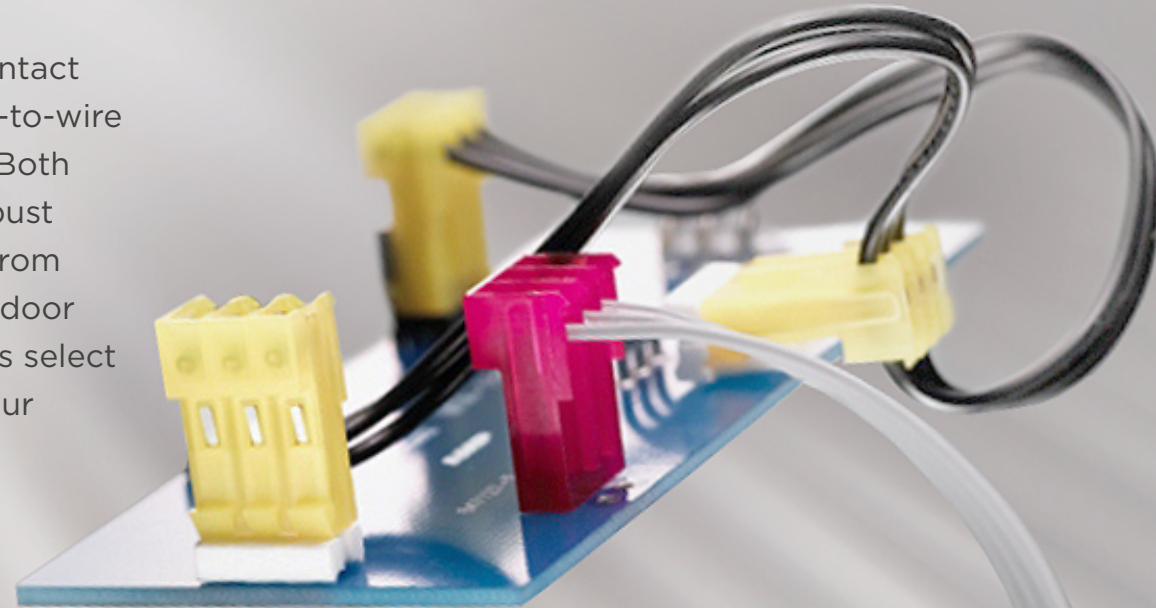


Virtual Sample Kit for MTA-100, CST-100 II, MTA-156, and SL-156 Connectors

By mass terminating wires, TE Connectivity's (TE) MTA connector system, based on insulation displacement contact (IDC) technology, is an efficient wire-to-board and wire-to-wire solution that can lower applied cost for your company. Both closed end and feed through types are offered. This robust portfolio of connectors is used in applications ranging from household appliances and fitness equipment to garage door openers, gasoline pumps and more. Browse through this select group of recommended products that can help keep your applications connected the way you intended.



Don't see what you are looking for?

[Contact us today!](#)

Applications



Small Home
Appliances



Healthcare
Devices



Automation
and Control



Lighting



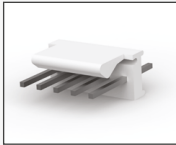
HVAC
Equipment



Industrial
Machinery

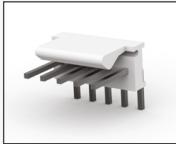
MTA-100 & CST-100 II CONNECTORS

MTA-100 HEADERS



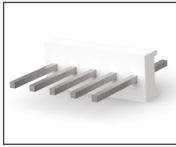
Straight, friction lock header assembly with tin plated posts, no retentive legs

[640456-5](#)



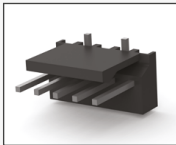
Right angle, friction lock header assembly with tin plated posts, no retentive legs

[640457-5](#)



Straight, flat header assembly with tin plated posts

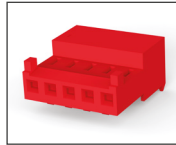
[640452-5](#)



Surface mount, right angle, friction lock header assembly with tin plated posts

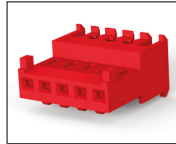
[3-647166-5](#)

MTA-100 CONNECTORS



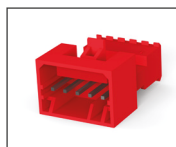
Closed end connector assembly with polarizing tabs, tin plated contacts

[3-643813-5](#)



Feed through connector assembly with polarizing tabs, tin plated contacts

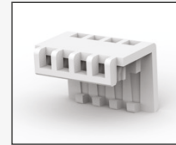
[3-644540-5](#)



Closed end posted connector assembly, tin plated contacts

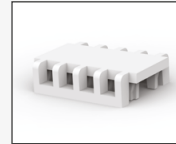
[3-647000-5](#)

MTA-100 ACCESSORIES



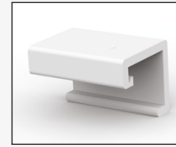
Closed end strain relief cover

[643075-5](#)



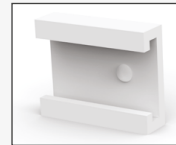
Feed through strain relief cover

[643077-5](#)



Closed end dust cover

[640550-5](#)



Feed through dust cover

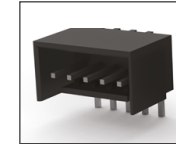
[640642-5](#)

CST-100 II CONNECTORS



Housing with polarizing tabs

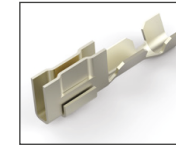
[1375820-5](#)



Right angle shrouded header assembly with tin plated posts

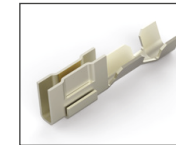
[3-644894-5](#)

CST-100 II CONTACTS



Receptacle of tin plated phosphor bronze

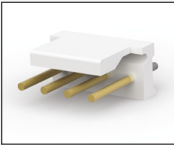
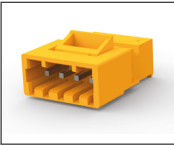
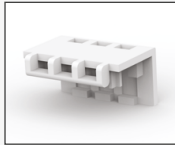
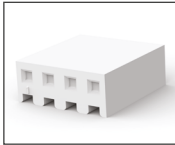
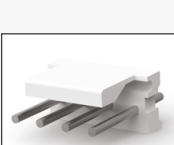
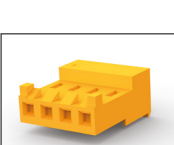

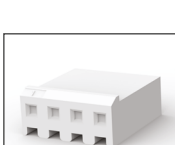



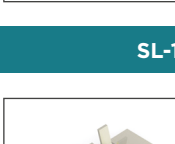
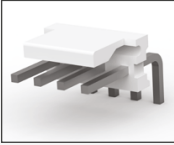
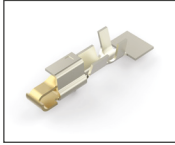
[1375819-1](#)



Receptacle of gold over nickel plated phosphor bronze

[1375819-2](#)

MTA-156 & SL-156 CONNECTORS

MTA-156 HEADERS	MTA-156 CONNECTORS	MTA-156 ACCESSORIES	SL-156 CONNECTORS
 <p>Straight, friction lock header assembly with gold plated round posts 3-641209-4</p>	 <p>Closed end posted connector assembly, tin plated contacts 3-641435-4</p>	 <p>Closed end strain relief cover 643067-4</p>	 <p>Housing without locking ramp or polarizing tabs 640251-4</p>
 <p>Straight, friction lock header assembly with tin plated round posts 640388-4</p>	 <p>Closed end connector assembly with locking ramp, with polarizing tabs, tin plated contacts 3-643817-4</p>	 <p>Closed end dust cover 640551-4</p>	 <p>Housing with locking ramp, no polarizing tabs 640250-4</p>
 <p>Right angle, friction lock header assembly with front bend, tin plated square posts 3-644754-4</p>	 <p>Feed through connector assembly without locking ramp or polarizing tabs, tin plated contacts 640599-4</p>	 <p>Feed through dust cover 640643-4</p>	<h3 style="text-align: center;">SL-156 CONTACTS</h3>  <p>Receptacle of nickel plated phosphor bronze with gold plated contact area 770476-2</p>
 <p>Straight, flat header assembly with tin plated square posts 640383-4</p>			 <p>Receptacle of nickel plated phosphor bronze 3-770476-1</p>



www.te.com/mta

© 2024 TE Connectivity Ltd. All Rights Reserved.

TE, TE Connectivity, and TE connectivity (logo) are trademarks owned or licensed by the TE Connectivity Ltd. family of companies. All other logos, products and/or company names referred to herein might be trademarks of their respective owners. Users of TE Connectivity products should make their own evaluation to determine the suitability of each such product for the specific application. TE Connectivity reserves the right to make any adjustments to the information contained herein at any time without notice. TE Connectivity expressly disclaims all implied warranties regarding the information contained herein, including, but not limited to, any implied warranties of merchantability or fitness for a particular purpose.